

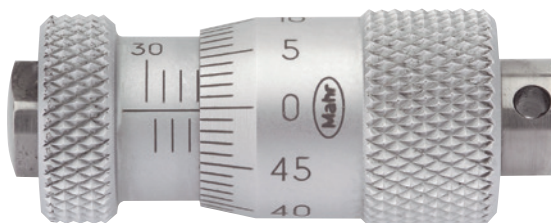
Micromar 44 F

Inside Micrometer

DIN
863-4

FEATURES

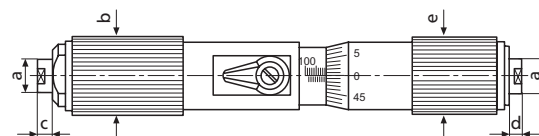
- Operating and display units with satin chrome finish
- Rigid, lightweight tubular construction
- Stainless spindle is hardened throughout and ground
- Measuring faces spherically lapped, one measuring face adjustable
- Measuring range of 100–125 mm with heat insulators and a locking device
- Package contains: case



TECHNICAL DATA

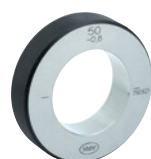
Order no.	Product type	Measuring range	Graduation value	Error limit	Spindle thread pitch	Standard
		mm	mm	µm	mm	
4163000	44 F	30 – 40	0.01	4	0.5	DIN 863-4
4163001	44 F	40 – 50	0.01	4	0.5	DIN 863-4
4163002	44 F	50 – 70	0.01	5	0.5	DIN 863-4
4163003	44 F	70 – 100	0.01	5	0.5	DIN 863-4
4163004	44 F	100 – 125	0.01	6	0.5	DIN 863-4
4163005	44 F	125 – 150	0.01	6	0.5	DIN 863-4
4163006	44 F	150 – 175	0.01	7	0.5	DIN 863-4
4163007	44 F	175 – 200	0.01	7	0.5	DIN 863-4

Order no.	a	b	c	d	e
	mm	mm	mm	mm	mm
4163000	7	12.5	2	4	12.6
4163001	7	12.5	2.5	4.5	12.6
4163002	7	13.5	2.5	4.5	13.6
4163003	7	13.5	4.5	4.5	14
4163004	8	20	4.5	4.5	20
4163005	8	20	8	8	20
4163006	8	20	8	8	20
4163007	8	20	8	8	20



ACCESSORIES

Order no.	Product name	Product type
4710050	Adjustment ring DIN 2250 C (30 mm)	355 E
4710060	Adjustment ring DIN 2250 C (40 mm)	355 E
4710070	Adjustment ring DIN 2250 C (50 mm)	355 E
4710090	Adjustment ring DIN 2250 C (70 mm)	355 E
4710120	Adjustment ring DIN 2250 C (100 mm)	355 E
4710121	Adjustment ring DIN 2250 C (125 mm)	355 E
4710122	Adjustment ring DIN 2250 C (175 mm)	355 E



355 E

Micromar 44 Cm / 44 Cms 1 / 44 Cms 2 / 44 Cms 3 / 44 Cms 4

DIN 863-4

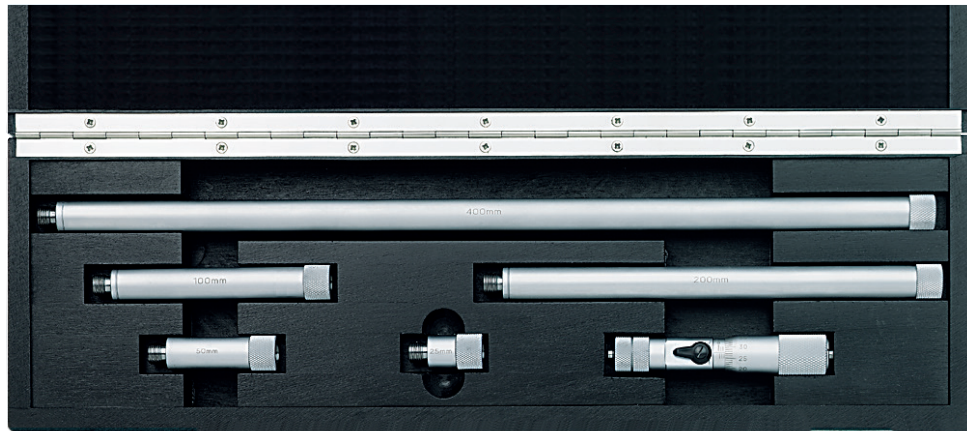
Measuring Head

FEATURES

- Operating and display units with satin chrome finish
- Rigid, lightweight tubular construction
- Stainless spindle is hardened throughout and ground
- Locking device
- Carbide-tipped spherical measuring faces
- Interchangeable extension 44 Cv contains cylindrical gage rods that are spring mounted in protective sleeves for the extension of the measuring range
- Protection sleeves have a satin chrome finish

Scope of delivery

- Measuring head 44 Cm, measuring range of 100–150 mm with extensions 44 Cv, case



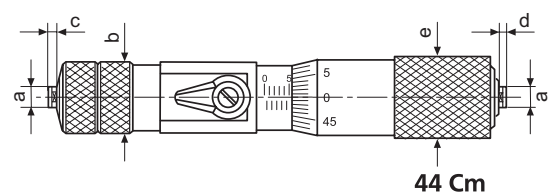
Application:

For measuring large inside diameters

TECHNICAL DATA

Order no.	Product type	Measuring range mm	Graduation value mm	Extensions 44 Cv	Error limit μm	Error limit μm	Spindle thread pitch mm	Standard
4168001	44 Cm	100–125	0.01		6	$4+(l/100)\mu\text{m}$ l= length of the combination in mm	0.5	DIN 863-4
4168020	44 Cms 1	100–150	0.01	25 mm		$4+(l/100)\mu\text{m}$ l= length of the combination in mm	0.5	DIN 863-4
4168021	44 Cms 2	100–300	0.01	25 mm 50 / 100 mm		$4+(l/100)\mu\text{m}$ l= length of the combination in mm	0.5	DIN 863-4
4168022	44 Cms 3	100–500	0.01	25 / 50 mm 100 / 200 mm		$4+(l/100)\mu\text{m}$ l= length of the combination in mm	0.5	DIN 863-4
4168023	44 Cms 4	100–900	0.01	25 / 50 mm 100 / 200 mm 400 mm		$4+(l/100)\mu\text{m}$ l= length of the combination in mm	0.5	DIN 863-4

Order no.	a	b	c	d	e
	mm	mm	mm	mm	mm
4168001	5	16	2	2	18
4168020	5	16	2	2	18
4168021	5	16	2	2	18
4168022	5	16	2	2	18
4168023	5	16	2	2	18



ACCESSORIES

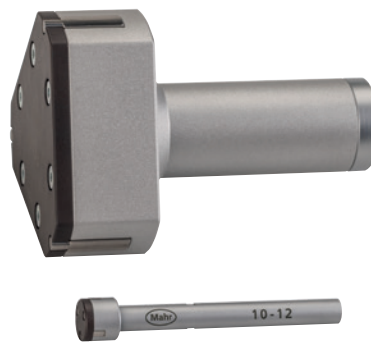
Order no.	Product name	Product type
4167030	Individual extension (25 mm)	44 Cv
4167031	Individual extension (50 mm)	44 Cv
4167032	Individual extension (100 mm)	44 Cv
4167033	Individual extension (200 mm)	44 Cv
4167034	Individual extension (400 mm)	44 Cv
4167035	Individual extension (800 mm)	44 Cv
4168016	Wood case for two extensions 44Cv 800mm	
4168160	Case for 44 Cms	

Micromar 44 Ak

Measuring Head

FEATURES

- Self-centering measuring head consists of 3 laterally positioned anvils, each are offset at intervals of 120°
- Anvils from 12 mm are carbide-tipped
- From 12 mm the anvils can be used to measure the bottom of a bore
- From 40 mm all measuring heads are made from aluminium to reduce weight



TECHNICAL DATA

Order no.	Product type	Measuring range	
		mm	Measuring range inch
4190330	44 Ak	6-8	.25-.3125"
4190331	44 Ak	8-10	.3125-.4"
4190332	44 Ak	10-12	.4-.4725"
4190333	44 Ak	12-16	.4725-.625"
4190334	44 Ak	16-20	.625-.775"
4190335	44 Ak	20-25	.775-1"
4190336	44 Ak	25-30	1-1.2"
4190337	44 Ak	30-40	1.2-1.6"
4190339	44 Ak	40-50	1.6-2"
4190340	44 Ak	50-60	2-2.35"
4190341	44 Ak	60-70	2.35-2.75"
4190042	44 Ak	70-85	2.75-3.35"
4190043	44 Ak	85-100	3.35-4"
4190044	44 Ak	100-125	4-4.9"
4190045	44 Ak	125-150	4.9-5.9"
4190046	44 Ak	150-175	5.9-6.9"
4190047	44 Ak	175-200	6.9-7.9"

Order no.	a	b	c	d
	mm	mm	mm	mm
4190330	1.5	4	1.5	58
4190331	1.8	4.3	1.5	58
4190332	1.8	4.3	1.5	58
4190333		6.5	4	64
4190334		6.5	4	64
4190335		9	4	68
4190336		9	4	68
4190337		15	5	76
4190339		15	5	76
4190340		18	5	79
4190341		18	5	79
4190042		23	7	97
4190043		23	7	97
4190044		27	7	132
4190045		27	7	132
4190046		27	7	132
4190047		27	7	132

